



ULTRA- **SIDEWINDER**[®] CABLE PROTECTION SYSTEMS

PROTECT CORDS AND CABLES AND AVOID DANGEROUS TRIPPING HAZARDS

Articulating pieces offer flexible design - curves, corners and s-curves are easily made while maintaining a completely flat profile.

Modular design makes it easy to reconfigure, repair, and replace targeted segments, even while the cable remains connected.

Simple installation - **no tools** required.

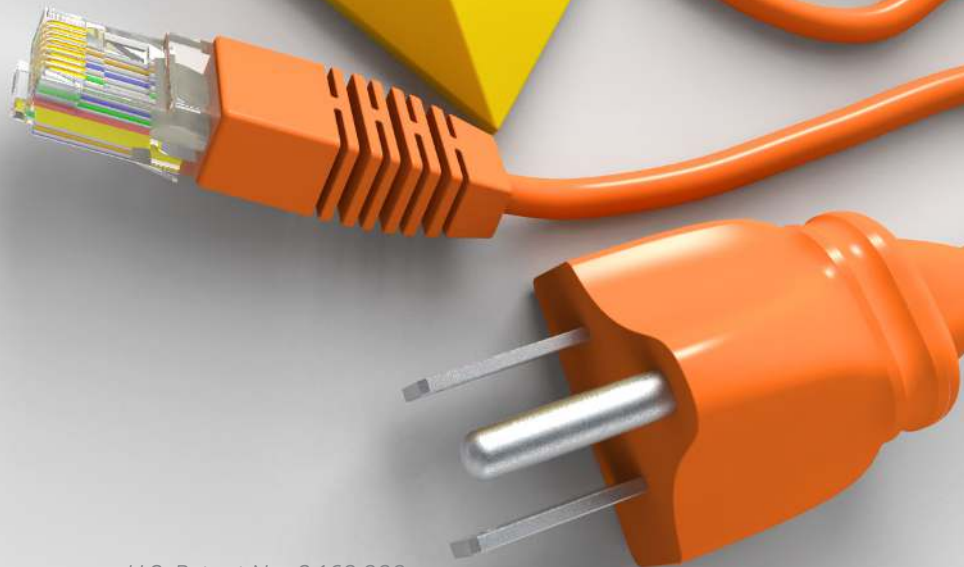
Fully **customizable** length

NOW AVAILABLE IN

SMALL

MEDIUM

AND LARGE!



ULTRATECH
INTERNATIONAL, INC.

U.S. Patent No. 8,168,888

FEATURES & BENEFITS

ARTICULATION

The Ultra-Sidewinder's design articulates left and right—allowing the system to turn corners and adapt to the layout of the room, while maintaining full protection for the cables and trip protection for pedestrians. This flexible design allows curves, corners and s-curves to be easily made while maintaining a completely flat profile.



AFFORDABLE

The Ultra-Sidewinder provides a cable protection system that is cost effective and economical enough to allow you to outfit your entire facility. Our superior design allows us to provide the same protection as other cable covers for less.



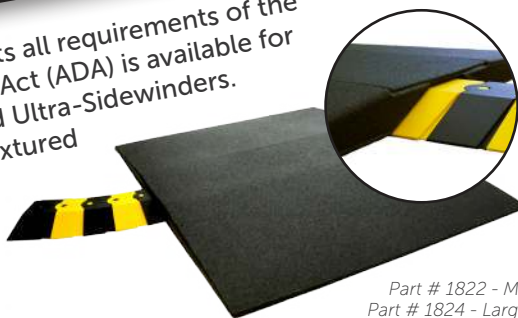
CUSTOMIZABLE LENGTH

Ultra-Sidewinders come in standard lengths but because of the modular design and segmented construction, custom lengths can be created for any application — from 1.5 inches to an unlimited length with the large size.



ADA COMPLIANT RAMP

An optional ramp that meets all requirements of the Americans with Disabilities Act (ADA) is available for the medium and large sized Ultra-Sidewinders. Simply place the durable textured polymer, non-skid surface ramp on top of installed Ultra-Sidewinder.



Part # 1822 - Medium
Part # 1824 - Large

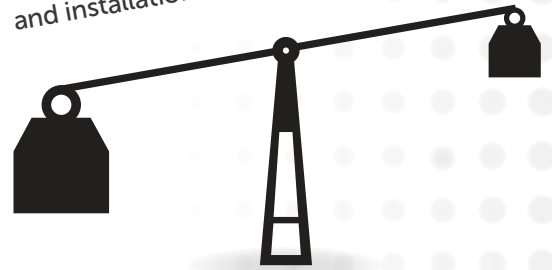
CUSTOM COLORS

Support your team, school, institution or company with a custom colored Ultra-Sidewinder. Minimum order required. Please contact us for details.



LIGHT WEIGHT

ABS plastic and superior design allow the Ultra-Sidewinder to be light weight. Saves on shipping and makes handling, assembly, and installation easier on personnel.



DRIVE OVER CAPABILITY

Support ribs under the Ultra-Sidewinder provide outstanding weight bearing capacity allowing for vehicles to safely drive over cords, hoses, and cables.*

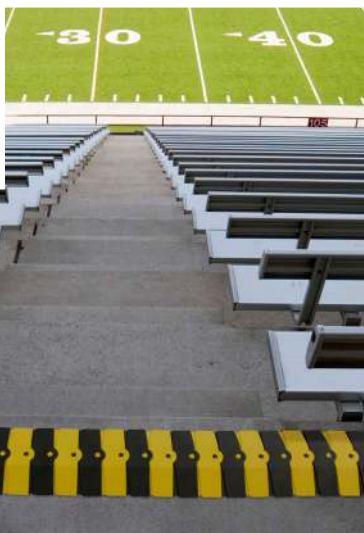
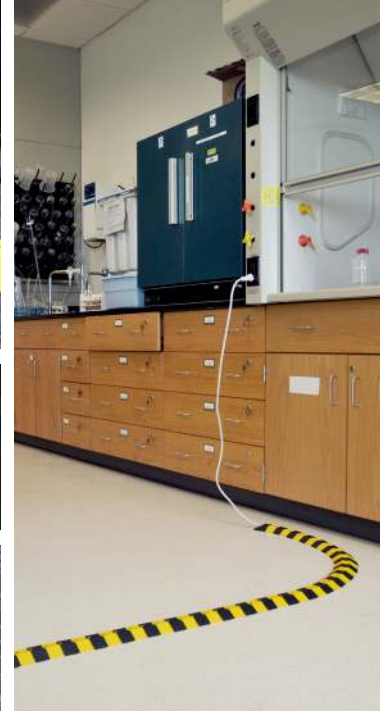


*For use with vehicles with pneumatic tires only. Steel or solid rubber tires may cause damage.

REGULATIONS

The Ultra-Sidewinder helps meet OSHA regulations: **29 CFR 1910.304 - 29 CFR 1910.305** and also satisfies the **National Electrical Code - Section 525.6**. Visit us at www.ultrasidewinder.com for more details.





SMALL

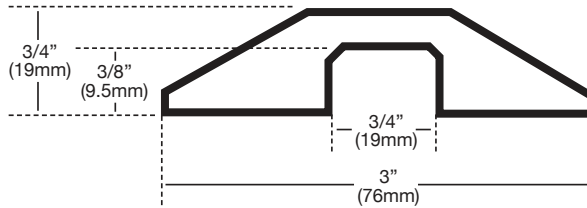


Also available in black, brown, and gray.



Coil for storage or easy portability and transport.

1 Extension Cord
3/8" (9.5 mm)



Ultra-Sidewinder® Small			
Load Capacity: 2,000 lbs./in ² (140.6 kg./cm ²) Load Capacity per axle: 32,000 lbs. (14,515 kg.)			
System with Endcaps 39.5" x 3" x 3/4" (1,003 mm x 76 mm x 19 mm) Weight: 1.5 lbs. (0.7 kg) Internal channel opening - 3/4"W x 3/8"H (19mm x 9.5mm)			
Black & Yellow	Black	Brown	Gray
1800	1802	1804	1806
Extension 13 1/2" x 3" x 3/4" (333 mm x 76 mm x 19 mm) Weight: 0.5 lbs. (0.2 kg) Internal channel opening - 3/4"W x 3/8"H (19mm x 9.5mm)			
Black & Yellow	Black	Brown	Gray
1801	1803	1805	1807
24-Foot Bulk Box (includes two endcaps) 29 1/2" x 3" x 3/4" (7,468 mm x 76 mm x 19 mm) Weight: 10.0 lbs. (4.5 kg) Internal channel opening - 3/4"W x 3/8"H (19mm x 9.5mm)			
Black & Yellow			
1820			

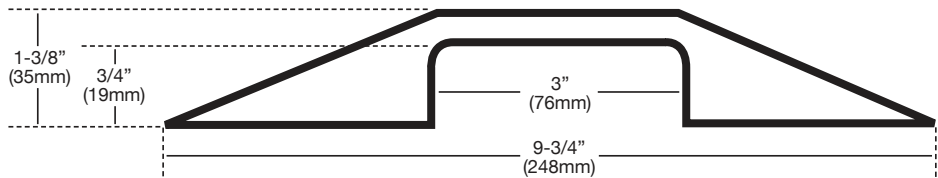
MEDIUM



18 Extension Cords
3/8" (9.5 mm)

or
4 Air Hoses
3/4" (19 mm)

or
3 Garden Hoses
5/8" (16 mm)



Ultra-Sidewinder® Medium	
Load Capacity: 260 lbs./in ² (18.3 kg./cm ²) Load Capacity per axle: 13,500 lbs. (6,123 kg.)	
System with Endcaps 33" x 9 1/4" x 1 1/2" (838 mm x 248 mm x 35 mm) Weight: 6.0 lbs. (2.7 kg) Internal channel opening - 3"W x 3/4"H (76mm x 19mm)	
Black & Yellow	Black
1830	1832
Extension 14 1/2" x 9 1/4" x 1 1/2" (358 mm x 248 mm x 35 mm) Weight: 2.0 lbs. (0.9 kg) Internal channel opening - 3"W x 3/4"H (76mm x 19mm)	
Black & Yellow	Black
1831	1833
Part # 1822 - Optional ADA compliant Ultra-Sidewinder Ramp (Medium)	

LARGE

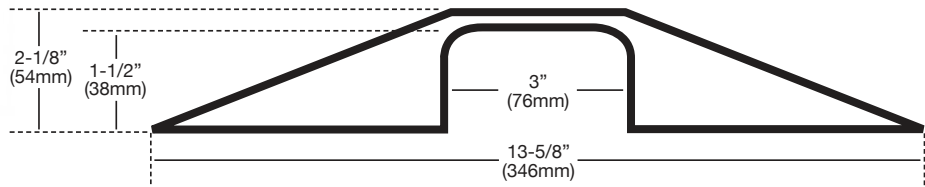


32 Extension Cords
3/8" (9.5 mm)

or
8 Air Hoses
3/4" (19 mm)

or
3 Garden Hoses
5/8" (16 mm)

or
MULT. Large Industrial Cables
5/8" - 1-1/2"
(16 mm - 38mm)



Ultra-Sidewinder® Large	
Load Capacity: 260 lbs./in ² (18.3 kg./cm ²) Load Capacity per axle: 13,500 lbs. (6,123 kg.)	
System with Endcaps 34" x 13 1/2" x 2 1/4" (863 mm x 346 mm x 54 mm) Weight: 13.5 lbs. (6.0 kg) Internal channel opening - 3"W x 1 1/2"H (76mm x 38mm)	
Black & Yellow	Black
1840	1842
Extension 14 1/2" x 13 1/2" x 2 1/4" (358 mm x 346 mm x 54 mm) Weight: 4.5 lbs. (2.0 kg) Internal channel opening - 3"W x 1 1/2"H (76mm x 38mm)	
Black & Yellow	Black
1841	1843
Part # 1824 - Optional ADA compliant Ultra-Sidewinder Ramp (Large)	

Video available at www.UltraSidewinder.com